

# C A P I T A L H E I G H T S

Rising above the attractive, urban neighbourhood of Rajagiriya with breathtaking visual access to lush, natural mangroves and the bird sanctuary nearby, is Capital Heights – Colombo's newest premium, apartment complex. Capital Heights is set to be the most desired collection of modern, apartment homes due to the prime location, superior construction and trendy design.

What differentiates Capital Heights from the rest is the solid value that has been implemented into every aspect, starting from its desirable location to the finest quality products and world-renowned brands as well as the distinguished expertise behind its construction and design. Capital Heights which is built for a superior lifestyle of luxury, convenience and gracious living, presents potential owners the best of both worlds by way of the perfect home and the perfect investment.





AN EXQUISITE HOME



A SUPERLATIVE INVESTMENT



Make your home, your life's greatest investment. Capital Heights Rajagiriya now presents the perfect opportunity to make the perfect investment at an exclusive address in what is set to be Colombo's most desired place to live.

A lucrative investment, discover pure value in every aspect of this awe-inspiring residential apartment project, from its quintessential location to its state-of-the-art architecture, magnificent design and spellbinding interiors.



All images are for the purpose of illustration only and are not an exact representation. Furniture and extras will not be provided with the apartment.





CAPITAL HEIGHTS -  
INVEST TODAY.  
REAP REWARDS FOREVER



Capital Heights is a unique and unparalleled real estate venture by Access Engineering PLC – one of Sri Lanka’s top-end, blue chip companies with portfolios of world-class standards and numerous successful real estate and engineering projects. Comprising 242 elite apartment complex that adds prestige and

value to everyday life, Capital Heights is so much more than a highly residential apartment complex with its offering of the best of both worlds - a refined lifestyle and the ideal opportunity for solid, long-term investment.



*All images are for the purpose of illustration only and are not an exact representation. Furniture and extras will not be provided with the apartment.*



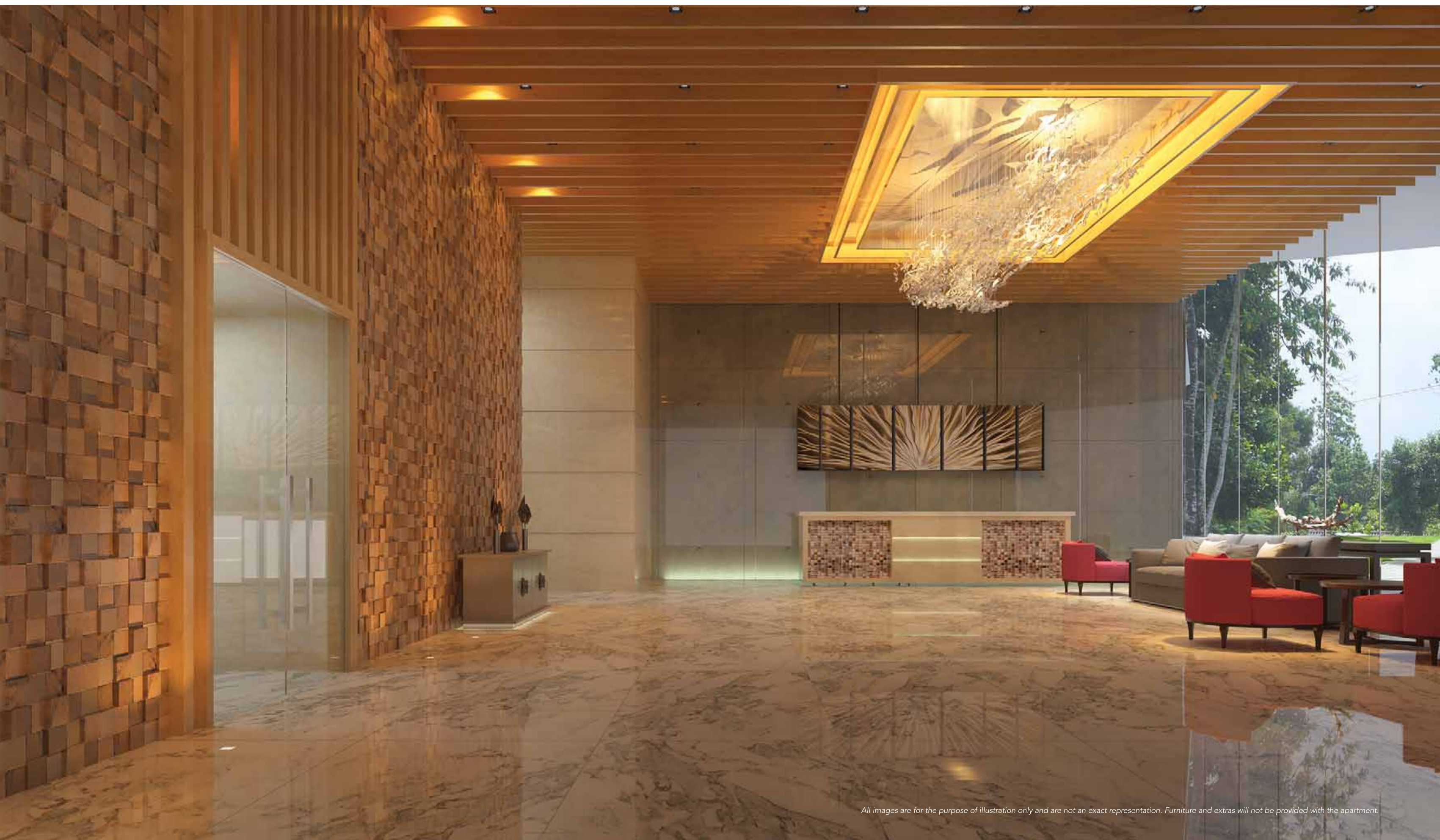


SRI LANKA -  
THE EMERGING HUB  
OF THE FUTURE



Sri Lanka, a land blessed with thousands of years of rich history, now proudly faces a prosperous future as South Asia's next emerging economy. With its geographically perfect location in the Indian Ocean, Sri Lanka is set to be South Asia's next, major, global logistics hub, with its doors wide open for trade,

investment, communications and financial services. This development offers great potential for overseas investors to reap the rewards of this island nation's promising future.



All images are for the purpose of illustration only and are not an exact representation. Furniture and extras will not be provided with the apartment.





RAJAGIRIYA -  
COLOMBO'S MOST  
DESIRED SUBURB



A beautiful location instantly uplifts the value and look of your home. Capital Heights, is scenically located on Buthgamuwa Road, in the quiet but steadily developing residential town of Rajagiriya. A part of the administrative capital of Sri Lanka, Sri Jayawardenepura Kotte, Rajagiriya has recently been transformed

into a beautiful ‘lake city’ replete with quiet, cozy neighbourhoods, landscaped parks, serene waterways and a natural bird sanctuary. Capital Heights has the privilege of these peaceful surroundings that belie its close proximity to the city.



All images are for the purpose of illustration only and are not an exact representation. Furniture and extras will not be provided with the apartment.





VALUE - ADDED FEATURES



- 242 exquisitely designed homes complete with all amenities and comforts.
- 2 BR & 3 BR Apartments and 10 Penthouses.
- Breathtaking views of the city, Waters Edge and a bird sanctuary.
- Just 7km from Colombo – 10-20 minutes to the city.
- A beautiful, picturesque location close to natural surroundings.
- Large infinity swimming pool, separate kids' pool and pool deck overlooking the lake.
- Fully equipped gym & fitness centre, with changing rooms.
- Function room for all residents on the 5th level (Podium Level).
- Sky Garden & Roof Terrace on the 40th level, with a stunning 360° view.
- Grand entrance foyer, spacious reception lobby and waiting lounge.
- Management Corporation Office.
- Decorative elevator lobby.

- 03 x 15 passenger high-speed elevators, including service elevator/ fireman's elevator.
- Garbage storage room per floor and garbage elevator.
- Mechanical plants such as sewer treatment plant, water storage tanks, pumps, solid waste unit, generator for standby electricity, transformer, central gas supply, furniture ramp, stretcher elevator access to lobby, building management system, etc.
- Multi split air conditioning.
- Maid's quarters with attached toilet.
- Utility Entrance
- Ground 02 Mezzanines and four dedicated levels for parking.
- Car parking space for each unit.
- Disabled-friendly parking.
- Parking area for visitors.



All images are for the purpose of illustration only and are not an exact representation. Furniture and extras will not be provided with the apartment.





ACCESS ENGINEERING PLC



Access Engineering PLC is one of the foremost entities in the Civil Engineering and Construction industry in Sri Lanka. The company was incorporated as a Public Limited Liability Company and has received accreditation from the National Construction Association of Sri Lanka (NCASL) as one of the country's foremost, specialist contractors.

Access Engineering PLC was established in 2001 and has been the force behind many multidisciplinary infrastructure projects across the country. The company's areas of expertise span across residential developments, bridges and flyovers, roads and highways, harbors, water treatment plants and water supply projects, land drainage and irrigation schemes and telecommunication infrastructure projects. With a track record of over 100 major projects, Access Engineering PLC is the premier Civil Engineering firm listed in the Colombo Stock Exchange.







VALUE IN EVERY ASPECT



## Indulgence Backed by Expertise

The best raw materials in the world must end up in the right hands for something truly magical to materialise; and that's why Access Engineering PLC, with the strongest reputation for construction and design in Sri Lanka, renowned for interior design

sophistication in several large-scale projects, partnered together with the China State Construction Engineering Corporation Ltd. The China State Construction Engineering Corporation is one of the largest property developers in China and is ranked 24th among Fortune 500 companies worldwide..

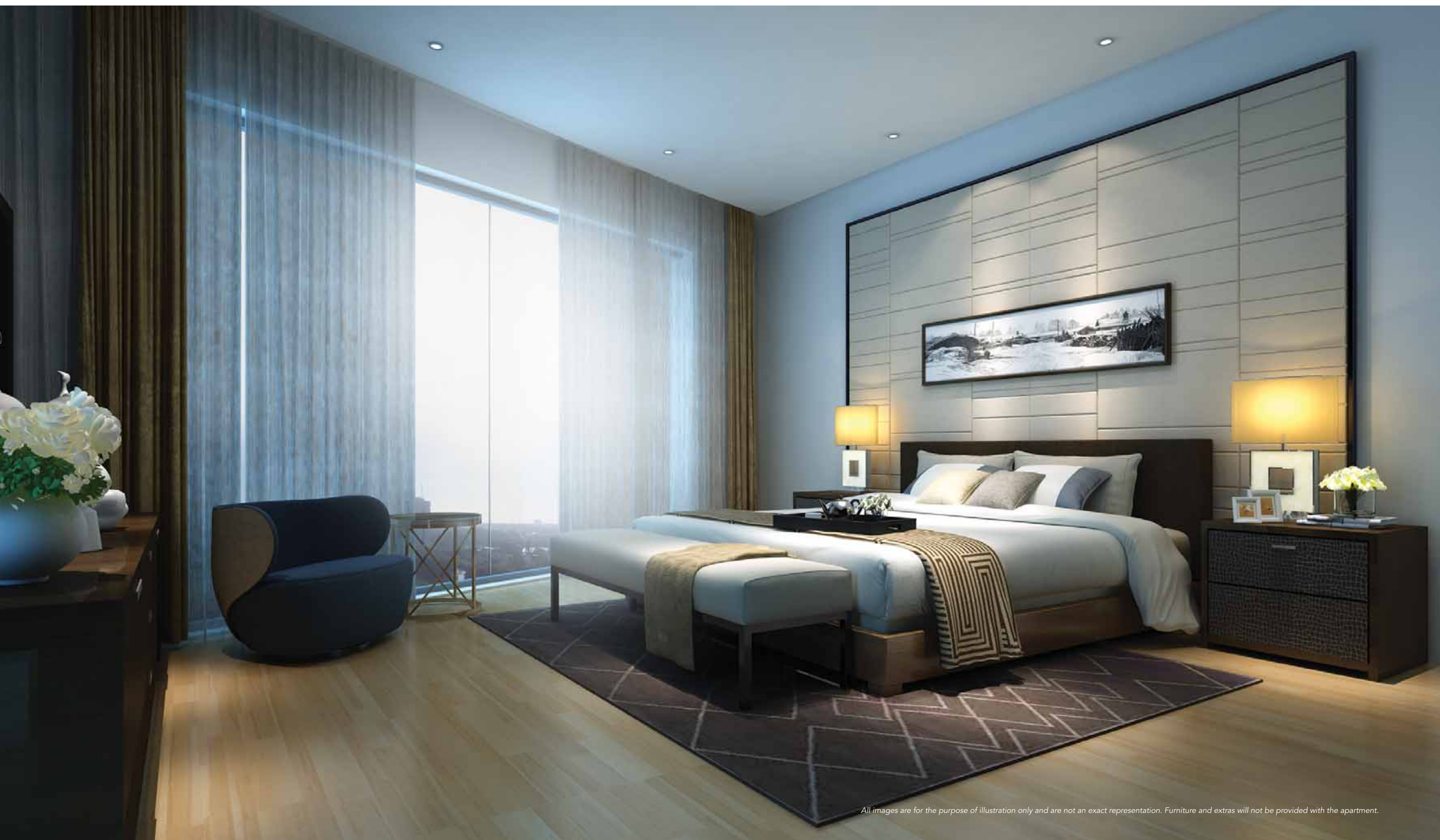


All images are for the purpose of illustration only and are not an exact representation. Furniture and extras will not be provided with the apartment.



Live, grow and be surrounded by beauty that's all your own. We believe in creating well laid out living spaces that are comfortable, beautiful, spacious and a joy to live in. Our expert designers have gone all

out and made maximum use of the stunning views all around along with natural light and ventilation. All you do is inhale peace of mind and surrounded yourself with beauty and elegance in this breathtaking place you call, home.



All images are for the purpose of illustration only and are not an exact representation. Furniture and extras will not be provided with the apartment.



Capital Heights is strategically located close to important places and institutions, offering convenience to residents.

The Parliament of Sri Lanka.

Overseas Children School of Sri Lanka.

Austasia Sports Complex.-

Water's Edge Hotel and Convention Centre.

Sports ground with well-turfed walkways, playgrounds and recreational areas.

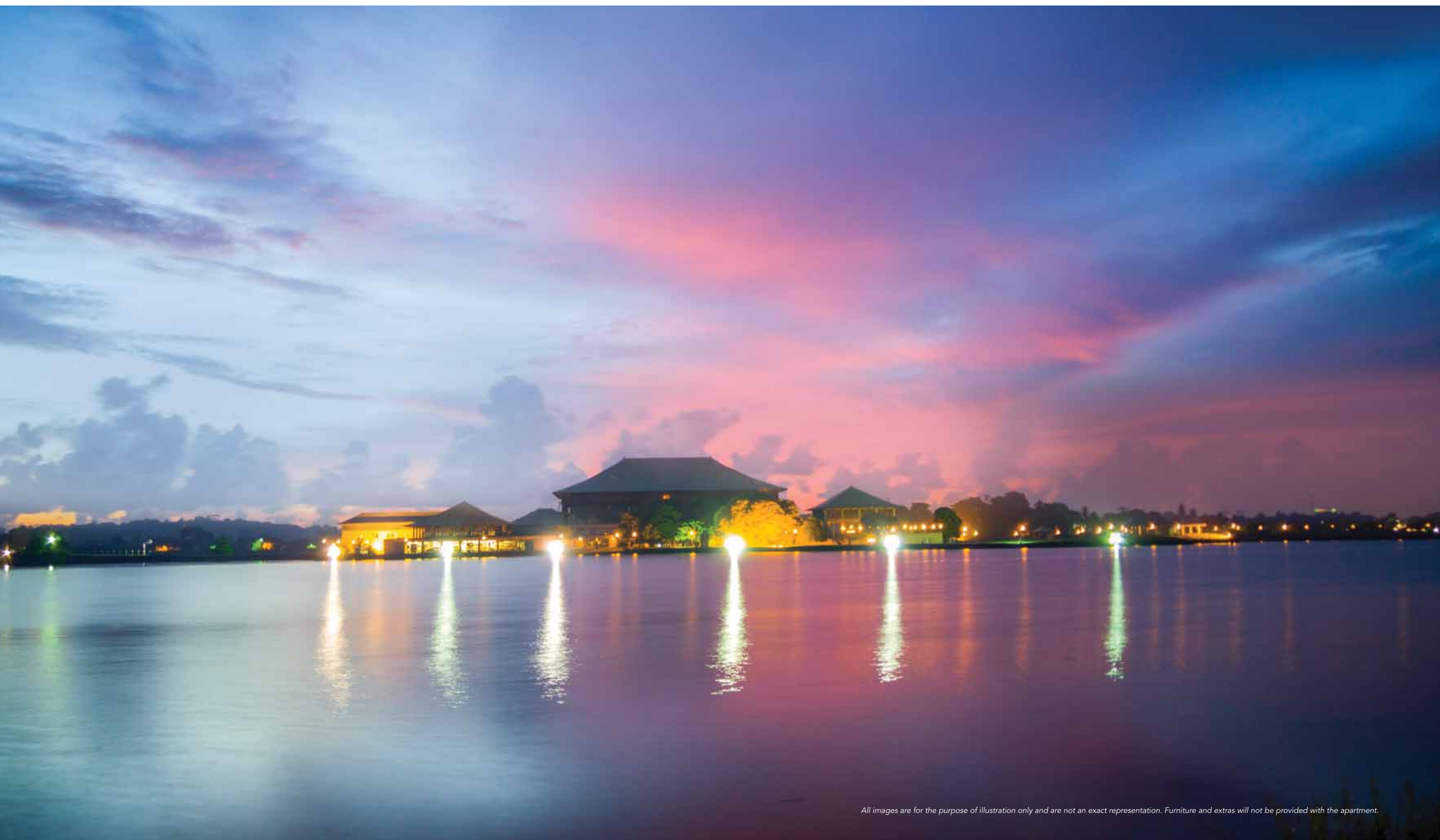
Diyatha Uyana - Water Sports & Leisure Park Centre.

State administrative complexes.

Religious places of worship.

Restaurants, cafes and shopping malls such as, McDonalds, Pizza Hut, Burger King,

Beverly Street, Fashion Bug, Odel, Hameedias and much more.





6 Spacious Elevators  
10ft driveway  
Ample car parking  
Hot water  
Provision for closet space

Air conditioning  
Tv/Telephone security system  
Balcony  
Large terrace space  
Drying yard



All images are for the purpose of illustration only and are not an exact representation. Furniture and extras will not be provided with the apartment.



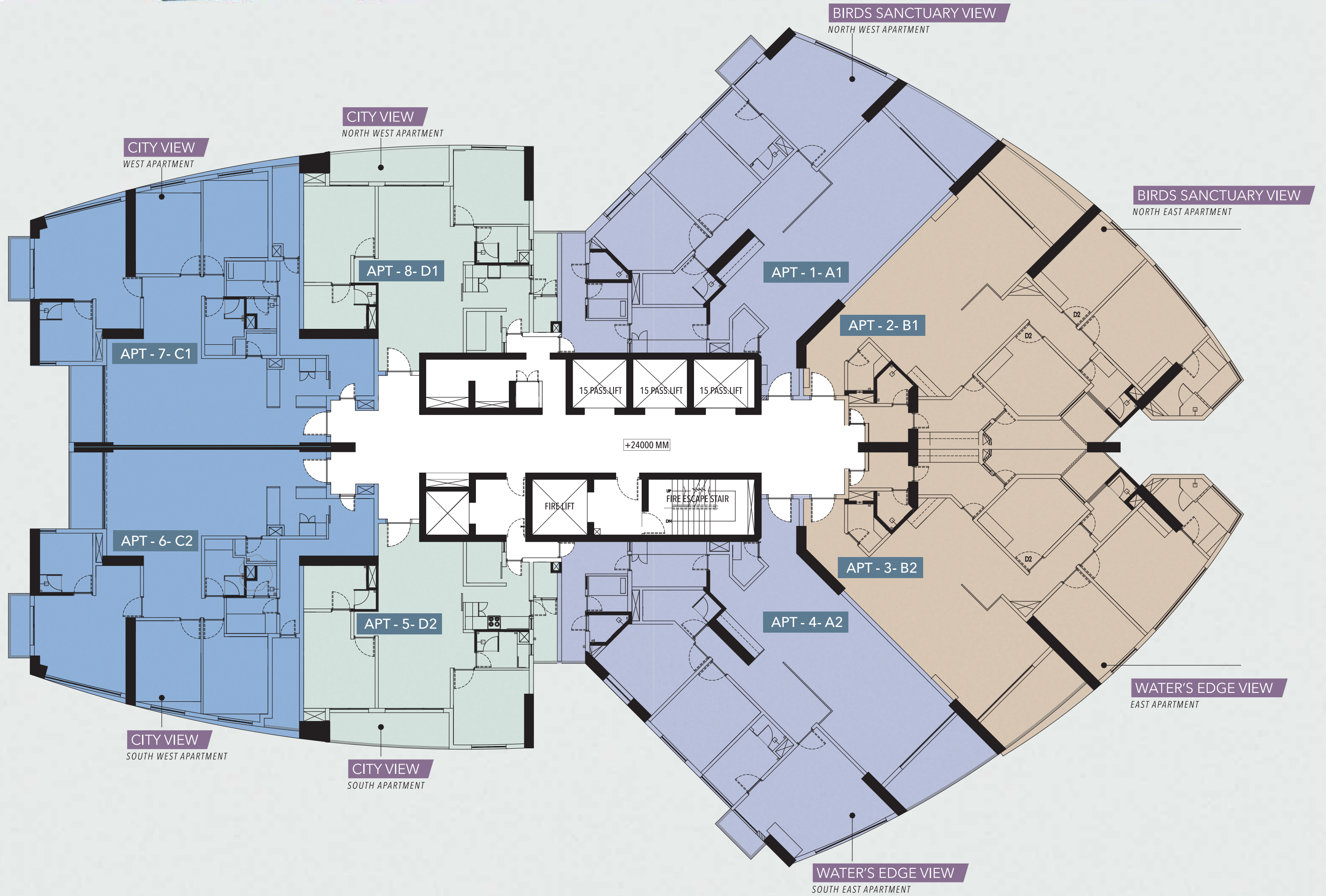
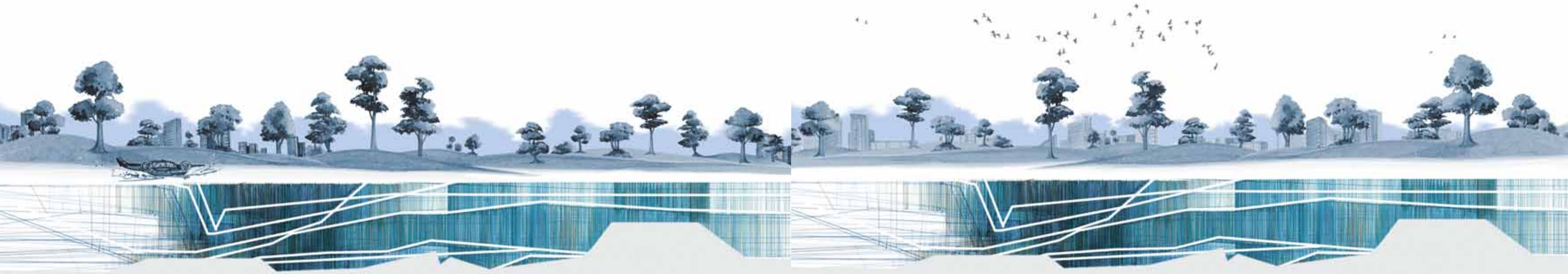
"Owning a home  
is a keystone of wealth...  
both financial affluence  
and emotional security"

*SUZE ORMAN - Writer & Financial Advisor*

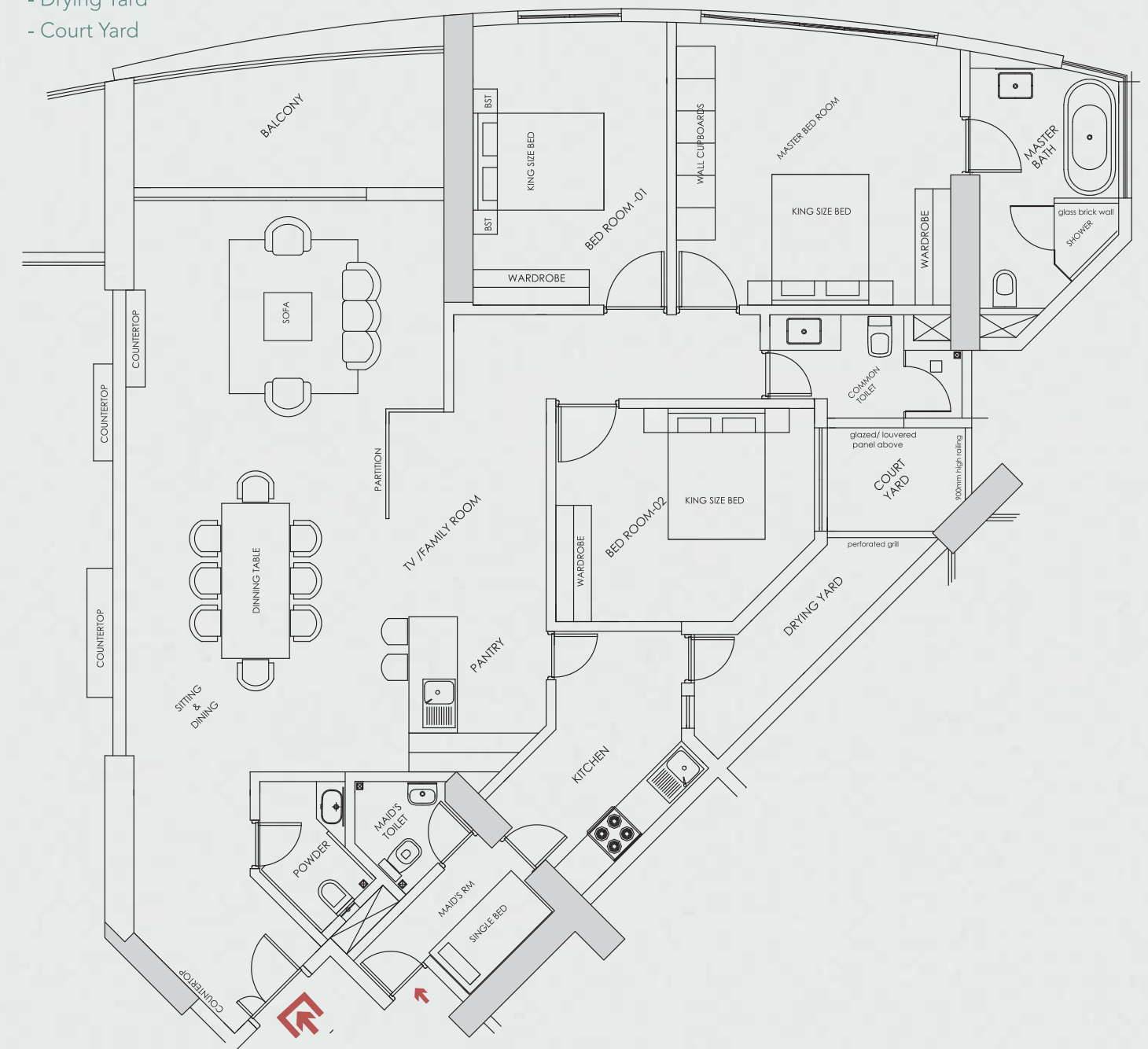
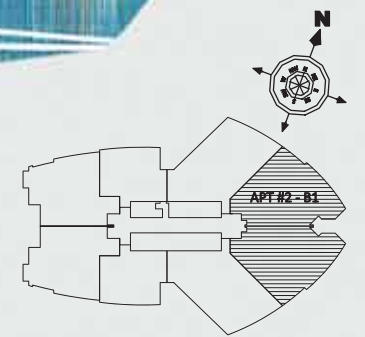


All images are for the purpose of illustration only and are not an exact representation. Furniture and extras will not be provided with the apartment.

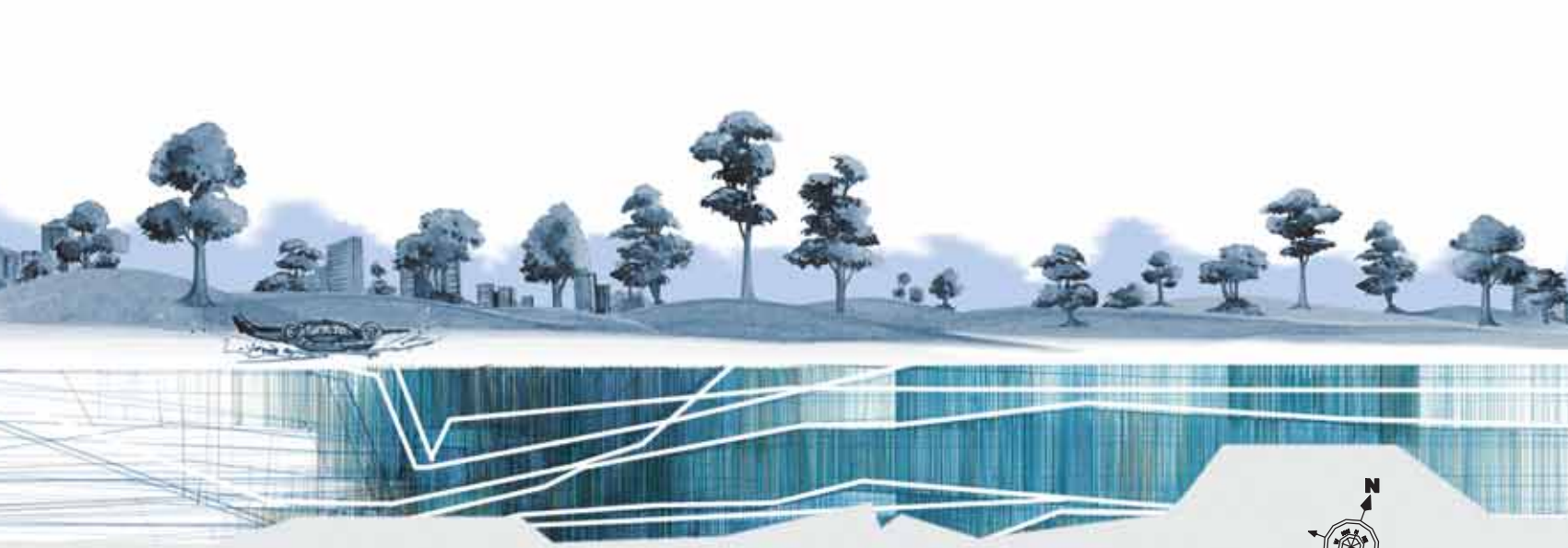












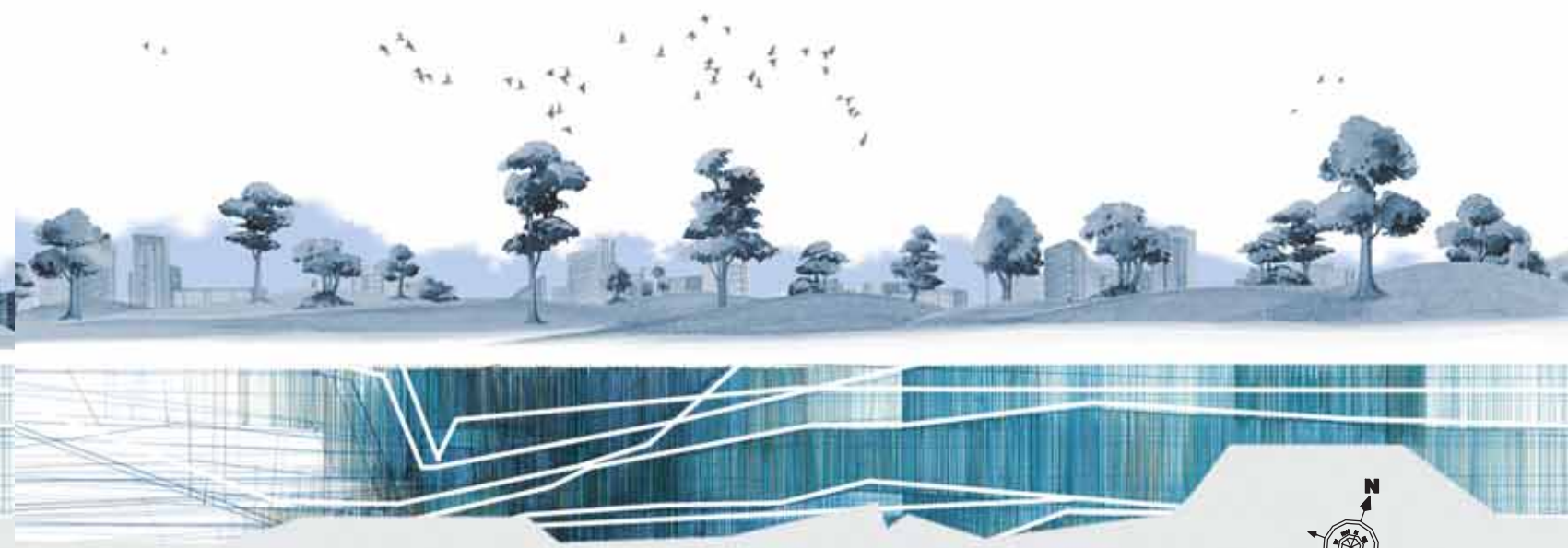
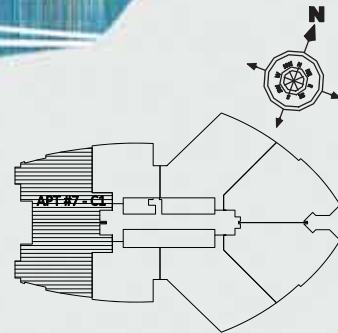
## TYPE - APARTMENT C



MAIN ENTRANCE

### 3. Type C – 1679.18 SQ.FT. - 156 SQ.M.

- Living/Dining
- 3 Bedrooms
- 3 Bathrooms (Master Bedroom on suite,  
1 Common toilet & 1 Powder room)
- Pantry
- Kitchen
- Maid's Room & Maid's Toilet
- 2 Balconies
- Drying Yard



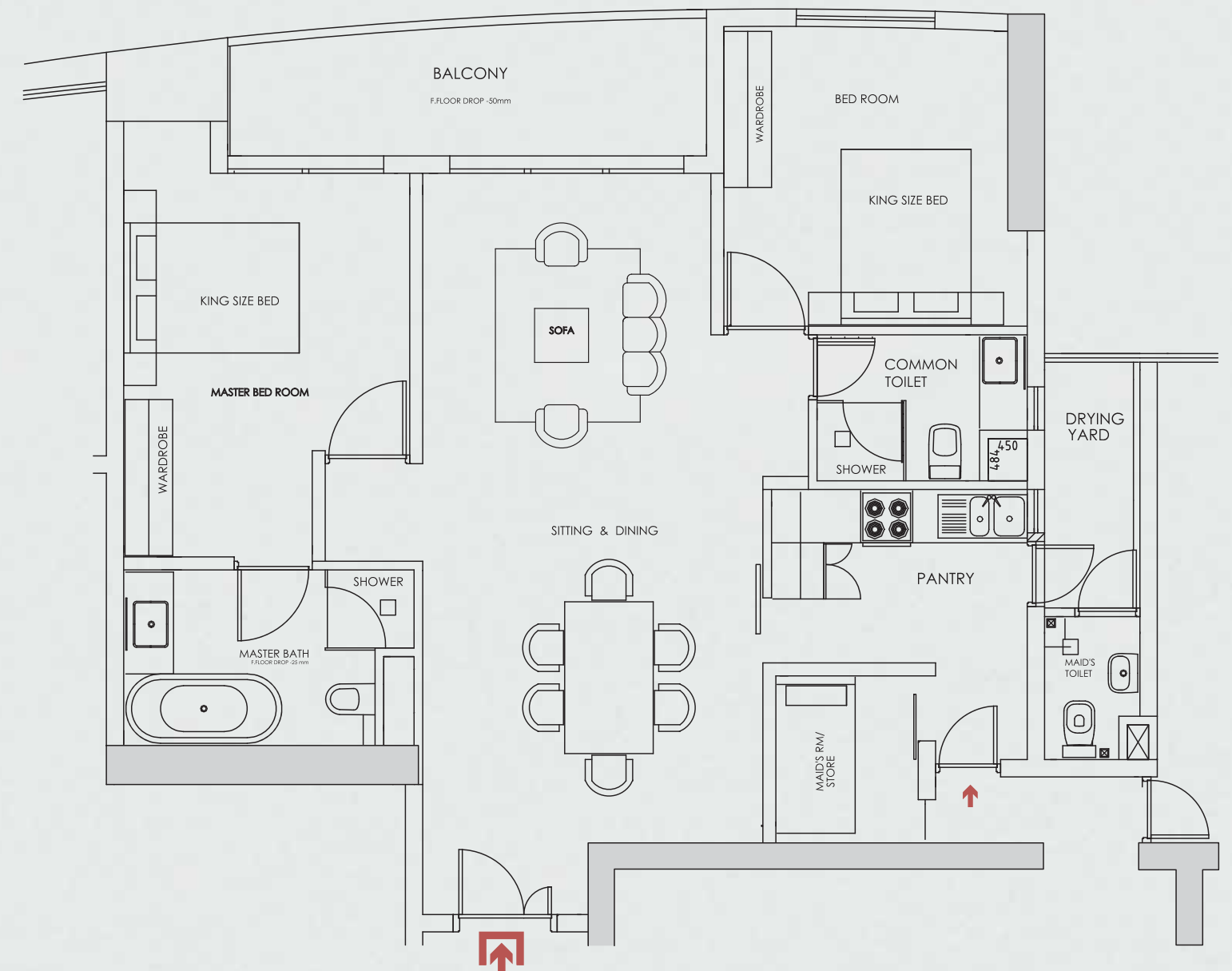
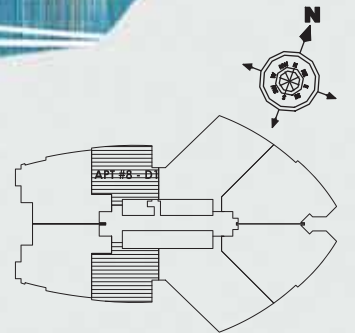
## TYPE - APARTMENT D



MAIN ENTRANCE

### 4. Type D – 1108.69 SQ.FT. - 103 SQ.M.

- Living/Dinning
- 2 Bedrooms
- 2 Bathrooms (Master Bedroom on suite,  
1 Common toilet)
- Pantry
- Kitchen
- Maid's Room & Maid's Toilet
- Terrace
- Drying Yard







DIRECTION  
ARROW



CAPITAL HEIGHTS  
LOCATION



GOOGLE LOCATION  
QR COD



- 10 BREADTALK
- 8 CAFE BEVERLY



- 3 KFC
- 13 PIZZA HUT
- 14 KBQ KOREAN BARBEUE



- 11 CHILD EYE (Pvt)



- 1 NDB BANK
- 9 HSBC GLOBAL SERVICE CENTER COLOMBO



- 12 RAJAGIRIYA FILLING STATION



- 2 HAMEEDIA
- 7 BEVERLY STREET



- 4 AMW WORKSHOP & SERVICE COMPLEX
- 5 FAIRWAY RESIDENCIES
- 6 THE ELEMENTS
- 15 NIPPON PAINT LANKA



EXEMPTION CLAUSE

Reasonable care has been taken in the preparation of this brochure, and the construction of the scale model and the show suite (collectively the Marketing Materials), but the developer and/or its agent(s) do not warrant the accuracy of the Marketing Materials and shall not be held responsible for any inaccuracies therein. The statements, information and depictions in the Marketing Materials are believed to be correct, but shall not be relied upon as statements or representations of fact, and they are not intended to form any part of the contract for the sale of the apartment units. In particular, visual representations, such as pictures and drawings are artist's impressions only, and are not representations of fact. All information contained in the Marketing Materials, including plans and specifications, are current at the time of printing, and are subject to such changes as are required or approved by the developer or the relevant authorities. The floor areas stated in the brochure are approximate measurements and are subject to final survey. The Sale and Purchase Agreement shall form the entire agreement between the developer and the purchaser and shall in no way be modified by any statements or representations, whether contained in the Marketing Materials or given by the developer and/or its agent(s) or otherwise.





📍 No 124 Barnes Place, Colombo 07 Sri Lanka.  
☎ Tel : +94 011 2679230/1  
🌐 [www.capitalheights.lk](http://www.capitalheights.lk)  
✉ [sales@bluestarrealities.com](mailto:sales@bluestarrealities.com)

GROUP MEMBER

